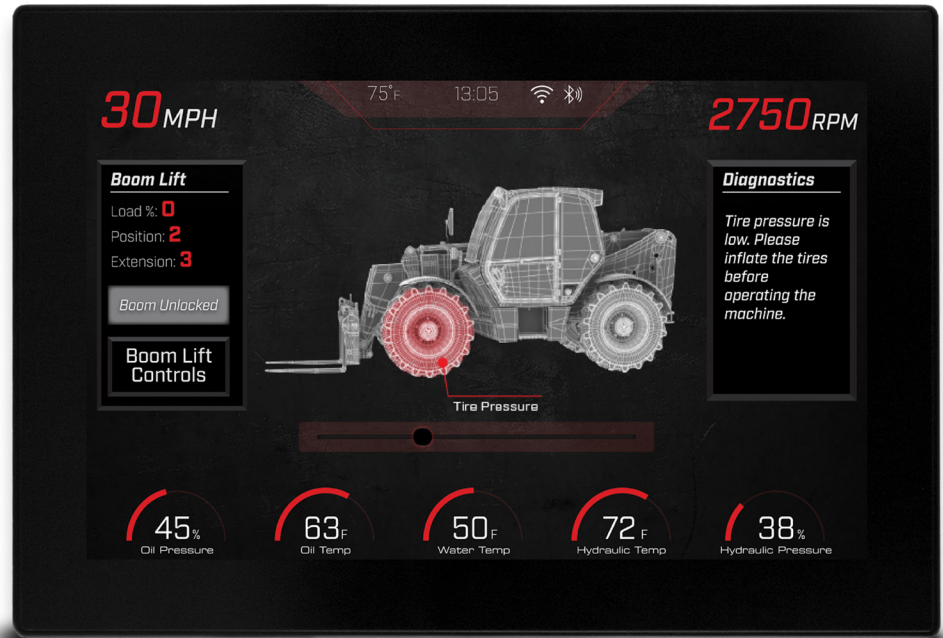


10.6-inch high-definition display for rich color graphics

Powerful processor for smooth animations and video playback

Glass display surface offers enhanced clarity and strength

Bonded glare-free LCD screen for superior visibility in sunlight



LARGE, FULL-COLOR DISPLAY BRINGS ENHANCED USER EXPERIENCE TO RUGGED APPLICATIONS

The PowerView 1100 is a full-color configurable display that integrates vital engine, transmission and diagnostic information into an easy-to-read operator interface. This large 10.6-inch high-definition display features expansive storage and a high-speed processor that boots quickly and can render high-quality graphics and animations.

The display's bonded LCD can easily be viewed in full sunlight, and its available glove-friendly touchscreen and rugged design make it a perfect solution for all types of environments and applications.

The PV1100 is available in portrait or landscape options.

BUILT FOR POWERVISION

PowerVision Configuration Studio® software lets programmers design stunning user interfaces, create intelligent applications with scripting and prototype quickly with a vast library of standard engine parameters.

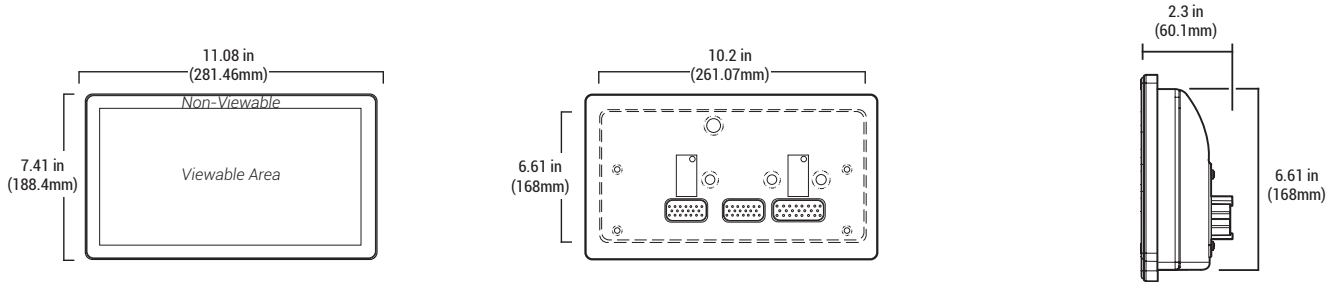


**IP
67**

POWerview® 1100

1712047
04-2022

DIMENSIONS



PRODUCT SPECIFICATIONS

COMPUTING		COMMUNICATION	
PROCESSOR	Renesas® R-Car M2 with Arm® Cortex®-A15 dual-core processor @ 1.5 GHz (32-bit)	CAN	(2) CAN 2.0B according to ISO 11898-2, J1939 and proprietary messaging
OPERATING SYSTEM	QNX® Realtime Operating System	SERIAL	RS-485 serial (Modbus: master or slave)
STORAGE	8 GB flash memory	USB	USB 2.0 full speed host
RAM	512 MB DDR3-SDRAM	ETHERNET	1 X Ethernet 10/100 Base-T (optional)
GRAPHICS	Renesas graphics processor	WI-FI	802.11 b/g radio (optional)
DISPLAY		BLUETOOTH	Fully integrated Bluetooth 2.1, class 1 (optional)
SCREEN SIZE	10.6 inches (231.36 mm × 138.82 mm)	ELECTRICAL	
TYPE	LVDS TFT LCD with LED backlight, 24-bit color	OPERATING VOLTAGE	6 – 36 VDC, reverse polarity protected
RESOLUTION	1280 x 768	INPUTS	(3) Analog 0 – 5 VDC, 4-20 mA, resistive, 10-bit resolution (5) Discrete digital, active-high (1) Frequency in (2Hz – 10kHz) 5V pk-pk min, 49V pk-pk max
CONTRAST RATIO	Typ. 1000:1	OUTPUTS	(1) 500 mA switched low-side (1) Frequency output (2Hz – 3KHz)
BRIGHTNESS	1000 cd/m ²	ENVIRONMENTAL	
SURFACE	Anti-glare	OPERATING TEMPERATURE	-40°C to +70°C (-40°F to +158°F)
TOUCH PANEL	Projected capacitive (PCAP) with glove touch	STORAGE TEMPERATURE	-40°C to +85°C (-40°F to +185°F)
HARDWARE		PROTECTION	IP66 and IP67, front and back, for outdoor use
REAL TIME CLOCK	Available with battery backup	VIBRATION	3.9 Grms (10–350Hz), 3 axes (ISO 15003)
CONNECTORS	(2) AMPSEAL 23 pin (main) (1) AMPSEAL 35 pin (optional) (1) M12 5 pin [Ethernet] (optional) (1) USB pigtail (1) Radio antenna jack (optional)	SHOCK	±50G in 3 axes
VIDEO INPUTS	(3) NTSC/PAL (single channel viewable)	EMC/EMI	SAE J1113, ISO 13766, CE per 2014/30/EU

⚠ WARNING: This product can expose you to chemicals including lead, which is known to the State of California to cause cancer. For more information, go to www.P65Warnings.ca.gov.

FOR MODEL & PART INFORMATION

ENOVATIONCONTROLS.COM/PV1100

FOR MANUAL & SUPPORT DOCUMENTS

SUPPORT.ENOVATIONCONTROLS.COM

FOR SUPPORT & WARRANTY

ENOVATIONCONTROLS.COM/SUPPORT

SALES CONTACT



CONTACT

✉ sales@novationcontrols.com
☎ +1 918.317.4100
www.novationcontrols.com

CORPORATE HEADQUARTERS

5311 S 122nd E Ave
Tulsa, Oklahoma, USA 74146
United States • United Kingdom • India • China



FM 28221 (Tulsa, OK-USA)
FM 29422 (UK)